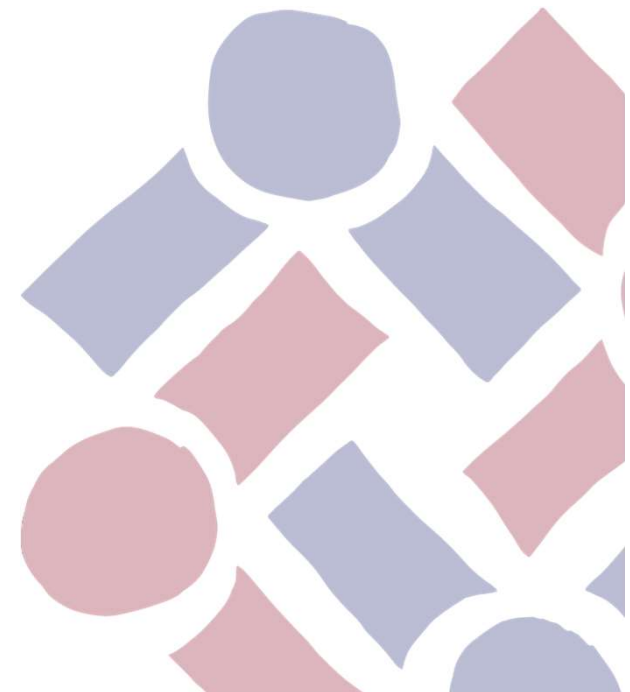




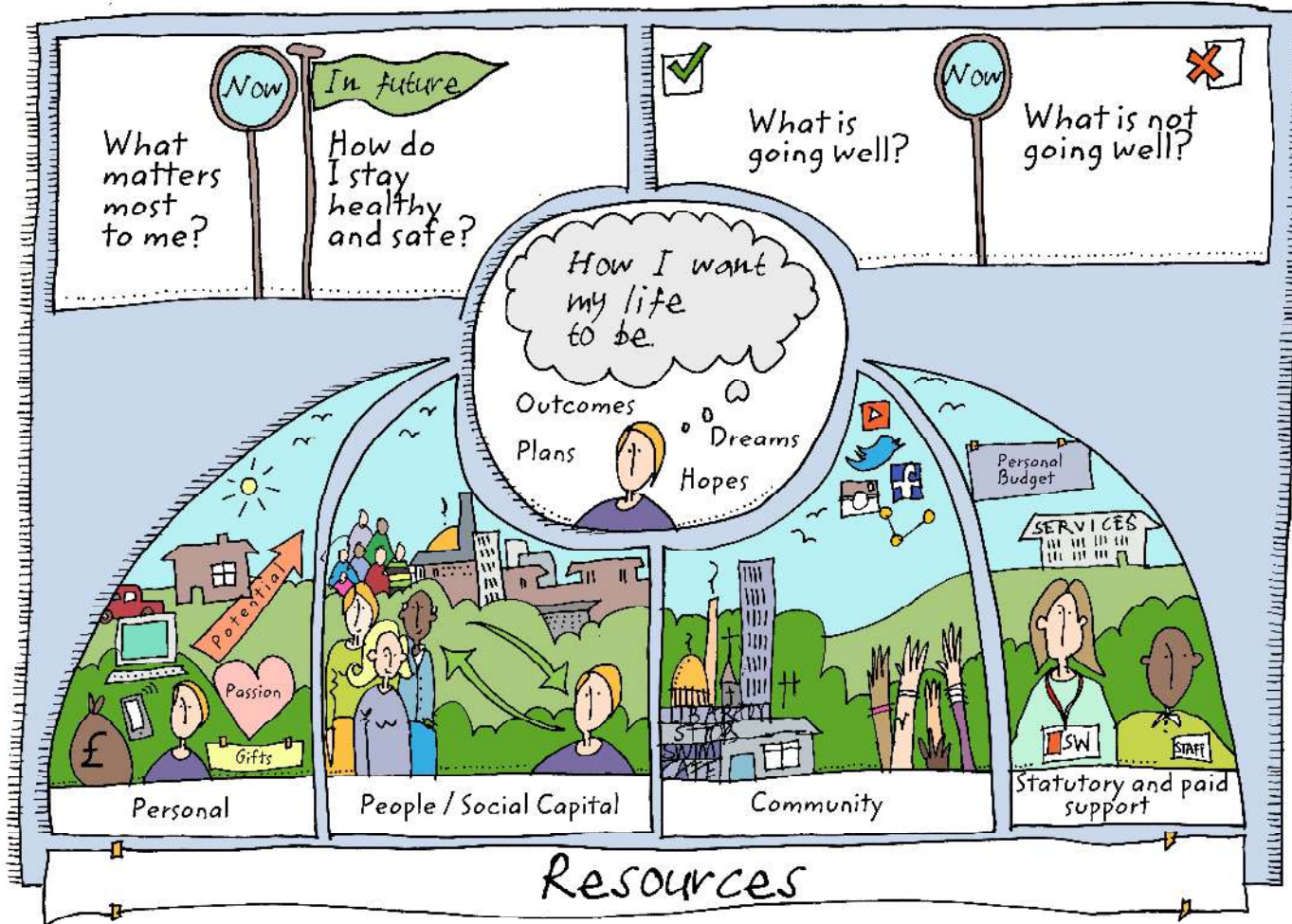
Community Led Support In Falkirk

Fraser Mitchell, NDTi Associate

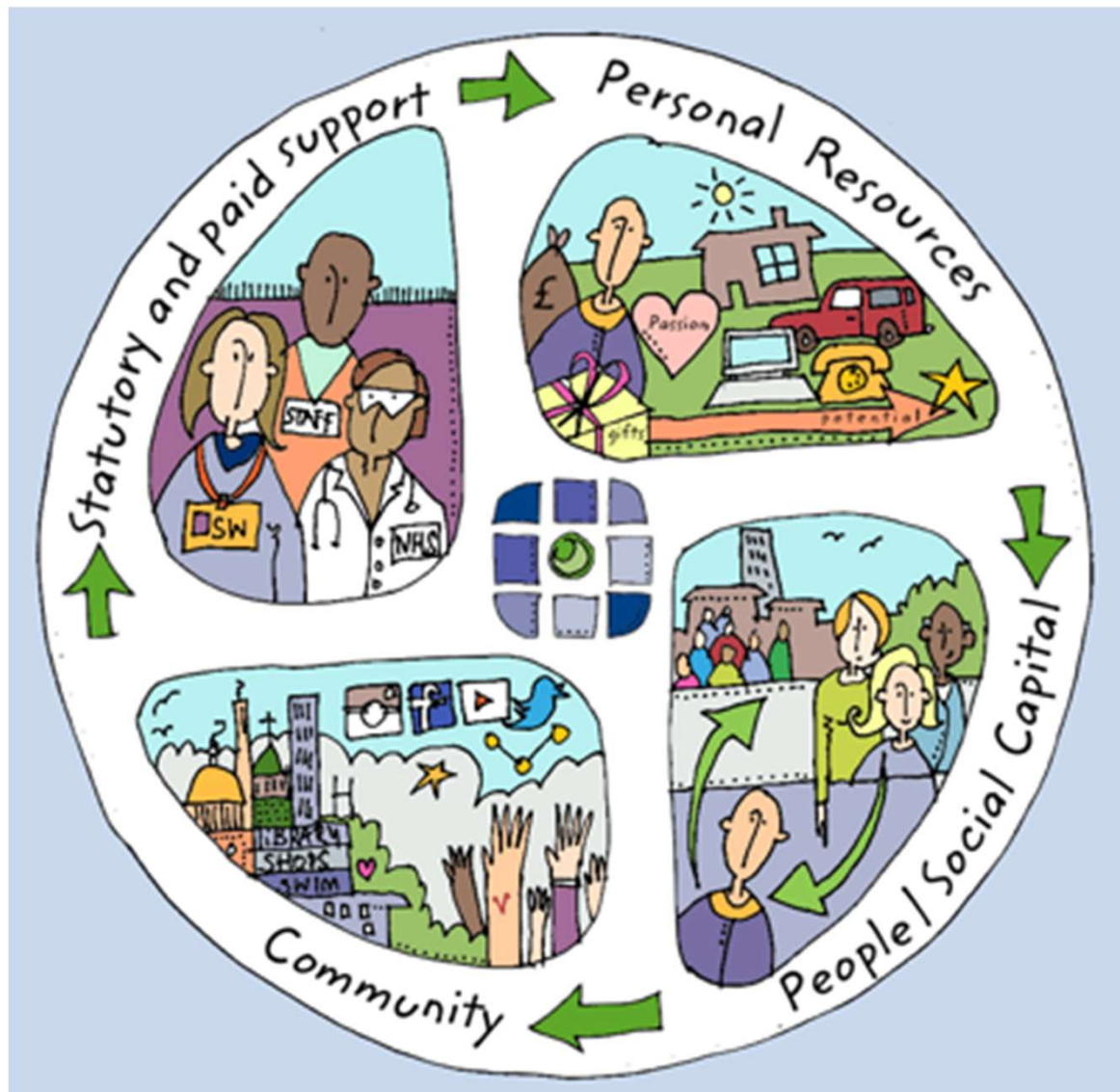
5th November, 2019



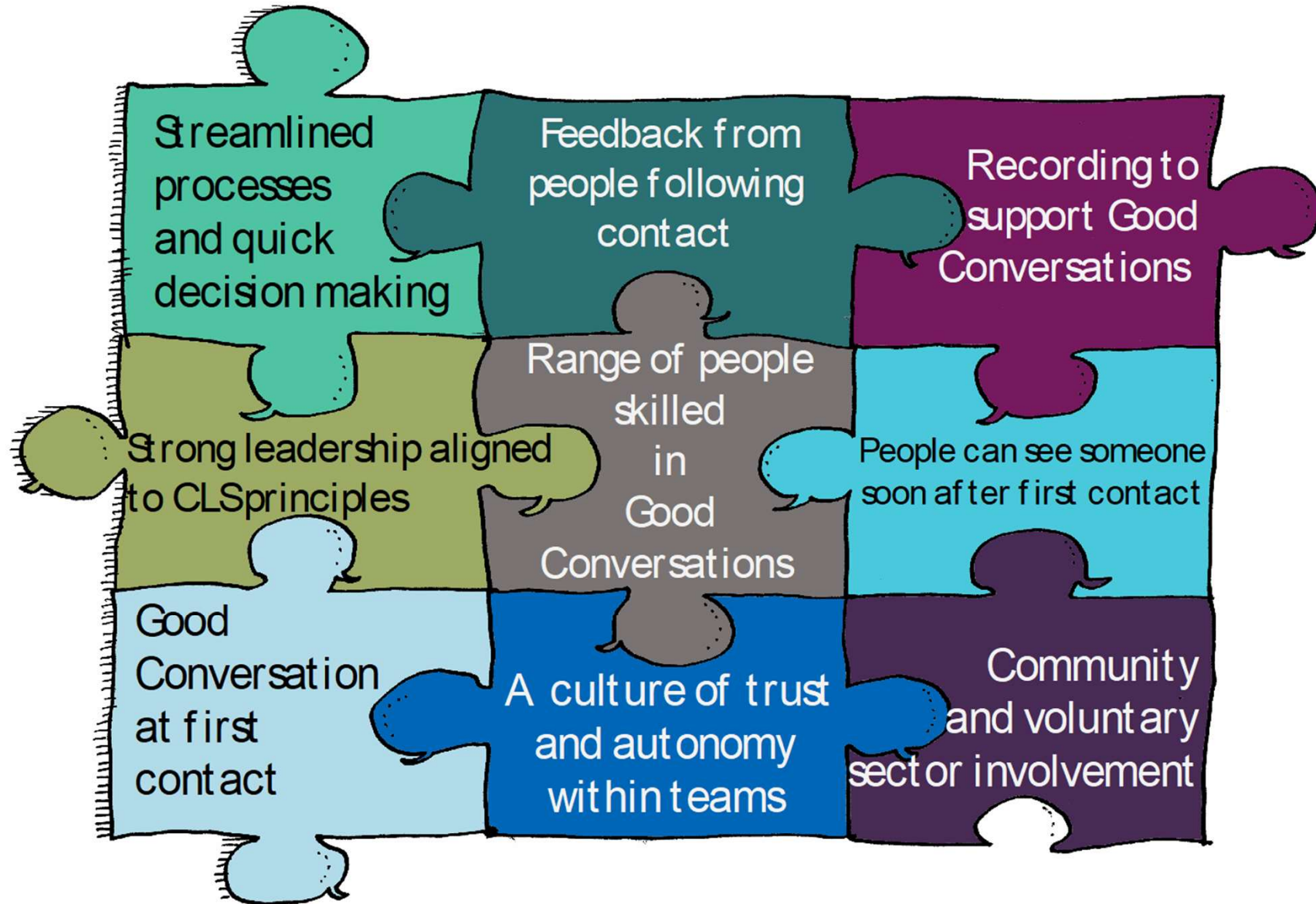
Person-centred, strengths based conversations - the cornerstone of CLS



The CLS 'resource wheel'



CLS as an approach – and a jigsaw!



CLS Principles

- Co-production brings people and organisations together around a shared vision
- There is a focus on communities - and each will be different
- People can get support and advice when they need it so that crises are prevented
- The culture becomes based on trust and empowerment (with and across organisations)
- People are treated as equals, their strengths and gifts built on
- Bureaucracy is the absolute minimum it has to be
- The system is responsive, proportionate and delivers good outcomes

